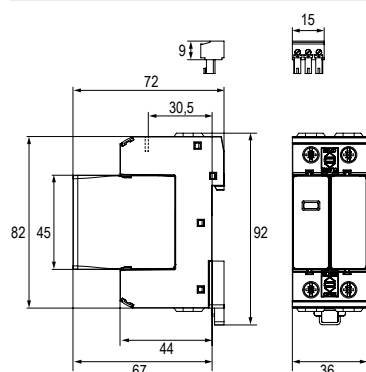


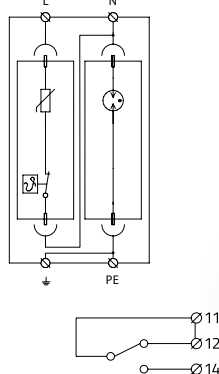
Type 1 + Type 2 12,5 kA

ESPAC V T12 12,5/275 1+1
ESPAC V T12 12,5/275 1+1 RI

DIMENSIONS *



CIRCUIT DIAGRAM



* All dimensions in mm

TECHNICAL DATA

Name	ESPAC V T12 12,5/275 1+1	ESPAC V T12 12,5/275 1+1 RI
CATALOG NUMBER	10210121080	10210121180
U_n Nominal voltage		230 V AC
U_c Maximum operating voltage L-N		275 V AC
U_c Maximum operating voltage N-PE		255 V AC
I_{imp} Lightning impulse current (10/350 μ s) L-N		12,5 kA
I_{imp} Lightning impulse current (10/350 μ s) N-PE		25 kA
I_n Nominal discharge current (8/20 μ s) L-N		30 kA
I_n Nominal discharge current (8/20 μ s) N-PE		30 kA
I_{max} Maximum discharge current (8/20 μ s) L-N		60 kA
I_{max} Maximum discharge current (8/20 μ s) N-PE		60 kA
U_p Voltage protection level at 5 kA L-N		0,9 kV
U_p Voltage protection level L-N		1,5 kV
U_p Voltage protection level N-PE		1,5 kV
U_p Voltage protection level L-PE		1,5 kV
I_{fi} Ability to independently switch off the following current N-PE		0,1 kA
I_{SCCR} Short-circuit current rating		50 kA
t_a Response time L-N		25 ns
t_a Response time N-PE		100 ns
Maximum overcurrent protection		160 A gL/gG
Cross-section of connected conductors solid (min/max)		1 mm ² / 35 mm ²
Cross-section of connected conductors stranded (min/max)		1 mm ² / 25 mm ²
Fault indication L-N		red indication field
Remote indication	-	potential-free change-over contact
Remote indication contacts	-	250 V / 0,5 A AC, 250 V / 0,1 A DC
Cross-section of remote indication conductors	-	1,5 mm ²
Degree of protection		IP 20
Range of operating temperatures (min/max)		-40 °C ... +80 °C
Humidity		5 - 95 %
Mounting		DIN rail 35 mm
According to standard		EN 61643-11:2012, IEC 61643-11:2011
Certifications:	ezü EZÜ Certification	

ARACTERISTICS

- ▶ Varistor and encapsulated spark gap as executive elements, connected in the 1+1 mode.
- ▶ High-performance varistor surge arresters in two-pole versions with a modular width of 36 mm.
- ▶ Provided protection against surges resulting from direct and indirect lightning strikes – homes, offices or industrial buildings, recommended for use in main or sub-distribution boards of a building.
- ▶ Installation at the boundary of zones LPZ 0 and LPZ 1 or higher, for buildings with LPL III and IV.
- ▶ Dedicated for TT and TN network systems.
- ▶ Optical indicator informing about the device status: green - functional, red - replace.
- ▶ Possibility of installing the surge protective device in two positions on a TH 35 rail.
- ▶ Replaceable modules.
- ▶ Possibility of feeding to the power terminals with a cable or a rail - prong or fork type.